



\$2,150,000

3101 S MILL ST

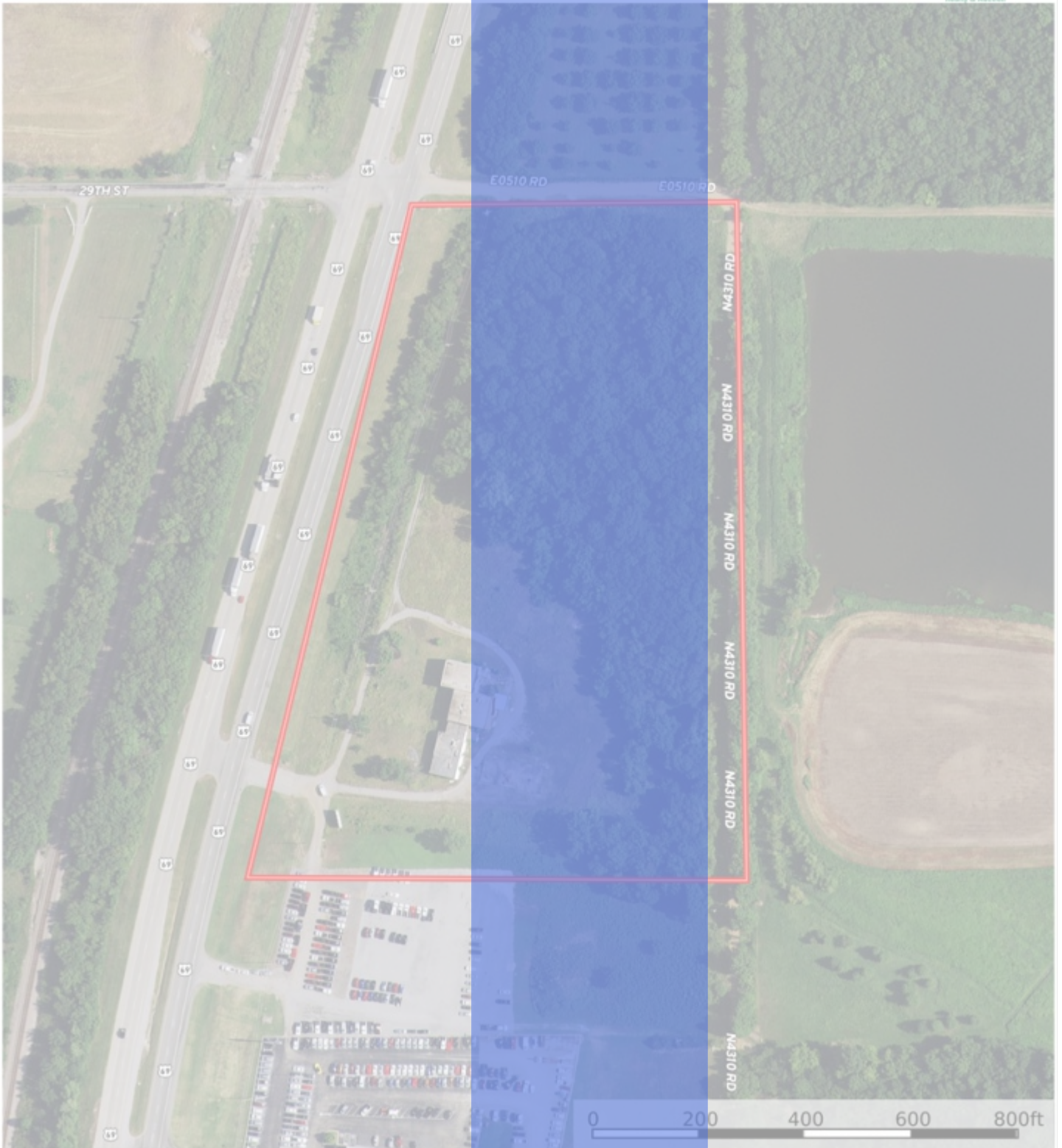
Nation's Premier Realty & Auction

Lot Size: 14.9 Acre

County: Mayes

Listing #: 35076-11326

Oklahoma, AC +/-



 Boundary

Stephen Nation
P: 918-253-4133

nation.stephen@gmail.com

P.O. Box 608, 1367 N Main Street



The information contained herein was obtained from sources deemed to be reliable. MapRight Services makes no warranties or guarantees as to the completeness or accuracy thereof.

KEY FEATURES

- COMMERCIAL PROPERTY
- HIGHWAY FRONTAGE US-69
- 80 MILES TO BENTONVILLE

- 75 MILES TO JOPLIN
- PRYOR IS HOME TO GOOGLE
- MIDAMERICA IND. PARK 2 MILES
- 30 MINUTES TO GRAND LAKE
- 45 MINUTES TO TULSA

COMMERCIAL LAND FOR SALE IN PRYOR, OK RIGHT ON US HWY 69



Stephen Nation

nation.stephen@gmail.com

www.jayokrealestate.com
(918) 944-0710

1367 N. Main, Jay, Oklahoma 74346